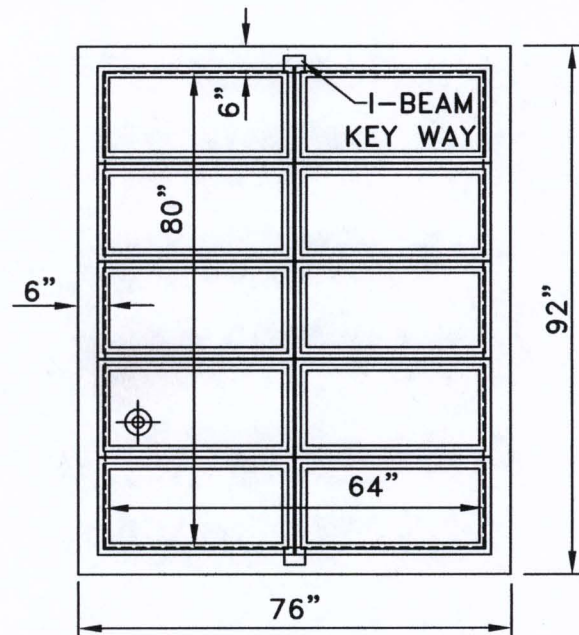
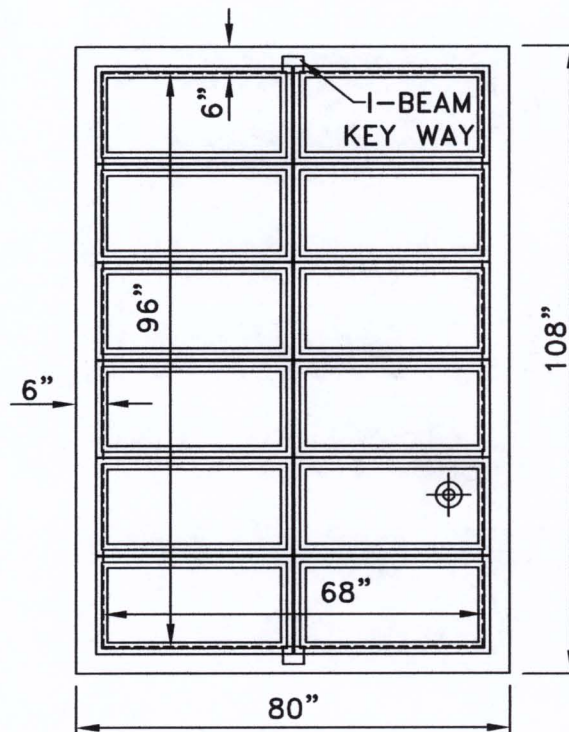


TYPE (8)
FRAME & COVER ARRANGEMENT
FOR METER VAULT INSTALLATION
WITH BY PASS



TYPE (10)
FRAME & COVER ARRANGEMENT
FOR METER VAULT INSTALLATION
WITH BY PASS



TYPE (12)
FRAME & COVER ARRANGEMENT
FOR METER VAULT INSTALLATION
WITH BY PASS

⊕ = PRE-DRILLED HOLE
 FOR (MXU)-ONE
 PER BOX

NOTES:

- APPROVED NON-TRAFFIC ALUMINUM COVERS WITH ACCESS HATCH MAY BE USED.
- I-BEAM DETAIL (SEE DWG. NO. WDET002G)
- RADIO READ UNIT (MXU) TO BE INSTALLED ON SERVICE LINES AS INDICATED BY METRO WATER SERVICES PERMIT OFFICE. REFERENCE DETAIL WDET015A OR WDET015C FOR LARGE METER FRAME & COVER RADIO READ (MXU) MOUNTING LOCATIONS.

METRO WATER SERVICES

FRAME & COVER
ARRANGEMENTS FOR FIRE METERS
WITH BY-PASS METER

NOT TO SCALE DATE: 02/22/08

DWG. NO. WDET002F



Hal Batthrop
 LICENSED DISTRIBUTION OPERATOR

S. V. Witt
 DIRECTOR OF WATER AND SEWERAGE SERVICES